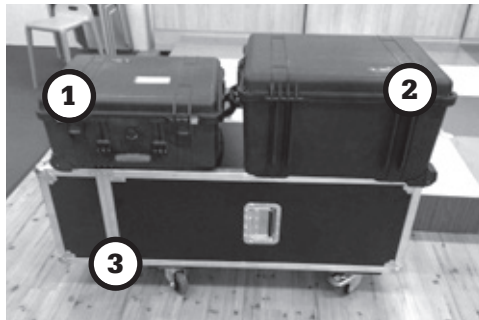


# Manual for installing the exhibition



There are three cases.

**Case 1:** contains 6 feet, screws, tools

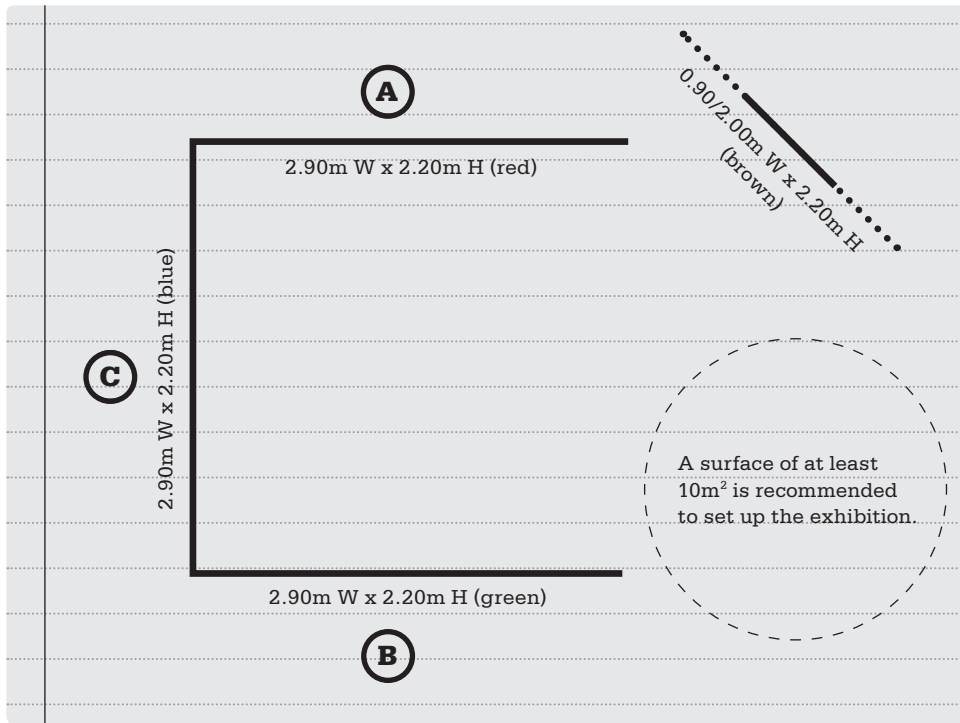
**Case 2:** contains 8 panels

**Case 3:** contains construction profiles (parts) + corners

< The entire exhibition fits in three cases.

The exhibition is set up in a U-form.

The introduction panel is disconnected from the other panels and should be the first panel which visitors see.



Inside



Outside

## Start!

Take all parts of the construction from case 3 and divide them into groups: brown/blue/red/green → Next, lay the parts in the correct position (see attachment for technical details) → Make three constructions of 2.90 metres, using the blue, red and green parts → Make 1 construction of 2.00 metres, using the brown parts → Now continue with step **1 to 7!**

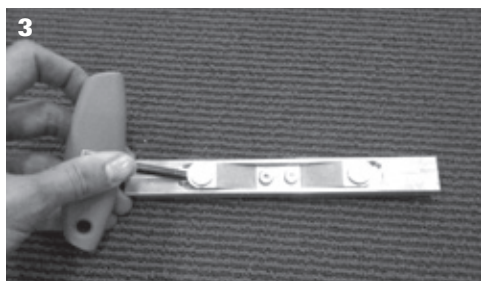
### Step 1 t/m 7



Take the following steps: screw the feet in the bottom parts. The middle panel (blue) has no feet



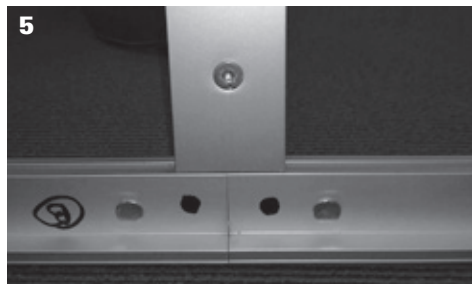
Start installing the middle panel (blue). Use the technical manual for further instructions. The middle panel (blue) has two corner profiles that are already attached to the corner profiles of the panels of red and green.



Make sure you click the parts together until you hear a loud clicking sound. If this does not happen easily, you can use the tools to click them more easily together.



Take the 'stabilisers' and click them together, two at the time. First put the bottom part on the construction and then place the upper part on top of it. Tighten the screws.



The stabilisers have to be perpendicular to the dividing line between two parts (for instance, to the dividing line between bottom middle horizontal and bottom right).

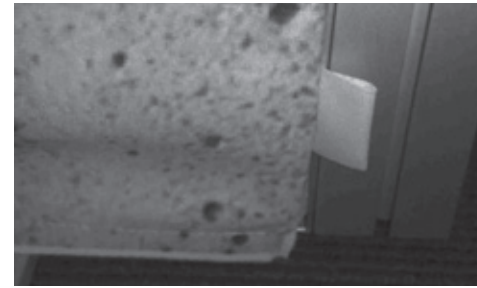


The magnetic stabiliser is part of panel A (red). This must be placed behind the white spots of the interior panel. *Make sure that the shiny side of the stabiliser points to the inside of the panel.*



Hanging the panels should be quite easy when done by two persons. Each person takes a corner and slides the rubber edge into the construction. Start with the upper part. Next, slide the edge down with your fingers so the entire panel is framed. The panel tightens automatically when the rubber edge is placed around the construction.

**Make sure that the panels are hung in the right order. Study the pictures carefully.**



### Extra tips

This cotton strip is attached to the exterior panel wall. When you pull it, the panel will be moved out of the frame. This is convenient for taking down the exhibition.



To encourage reading and writing, it is important to create a pleasant atmosphere. Before the groups arrive, make piles of top-twenty children's or young-adult literature and put pencils and scissors on the tables. If you have a showcase at your disposal, you can put Anne Frank's diary in it and refer to its location in the library.



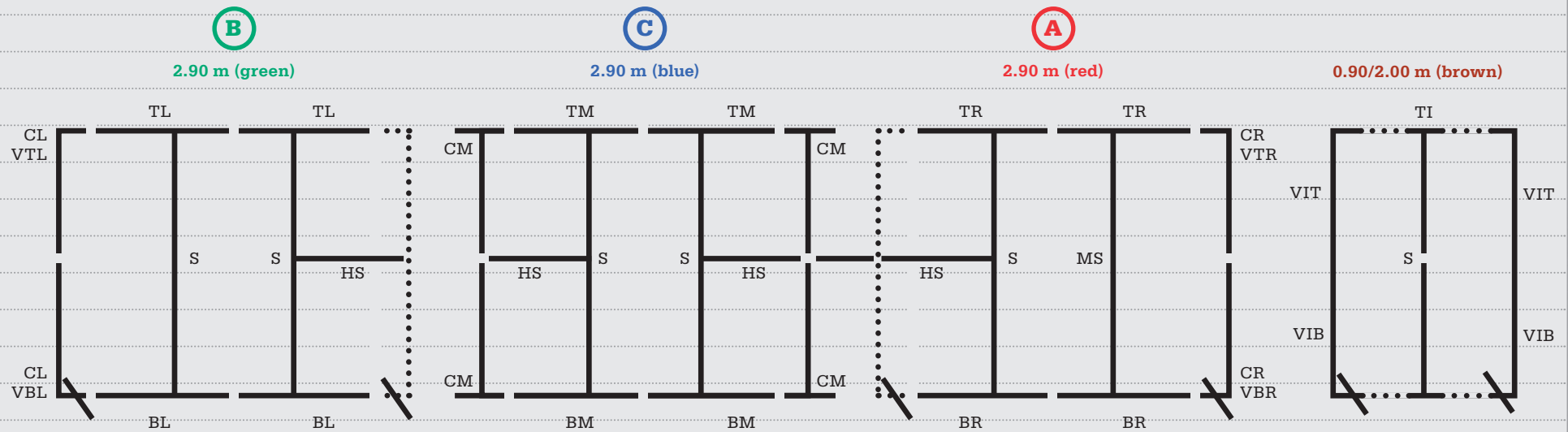
< The exhibition should be set up invitingly.



< Ideally, there will also be tables for pupils to write.

# Technical Annex

OVERVIEW EXHIBITION, SEEN FROM THE INSIDE



### Left Panel 290 cm B

- Δ Leave in!
- CL Corner Left
- TL Top Left
- BL Bottom Left
- VTL Vertical Top Left
- VBL Vertical Bottom Left
- S Stabilizer
- HS Horizontal Stabilizer

### Middle panel 290 cm C

- Δ Leave in!
- CM Corner Middle
- TM Top Middle
- BM Bottom Middle
- S Stabilizer
- HS Horizontal Stabilizer

### Right Panel 290 cm A

- Δ Leave in!
- MS Magnetic Stabilizer
- CR Corner Right
- TR Top Right
- BR Bottom Right
- VTR Vertical Top Right
- VBR Vertical Bottom Right
- S Stabilizer
- HS Horizontal Stabilizer

### Introduction panel 90/200 cm

- Δ Leave in!
- BI Bottom Intro
- TI Top Intro
- VIT Vertical Intro Top
- VIB Vertical Intro Bottom
- S Stabilizer



Corner Middle (CM) and foot



Horizontal Stabilizer (HS)



Corner Left (CL) or Corner Right (CR)